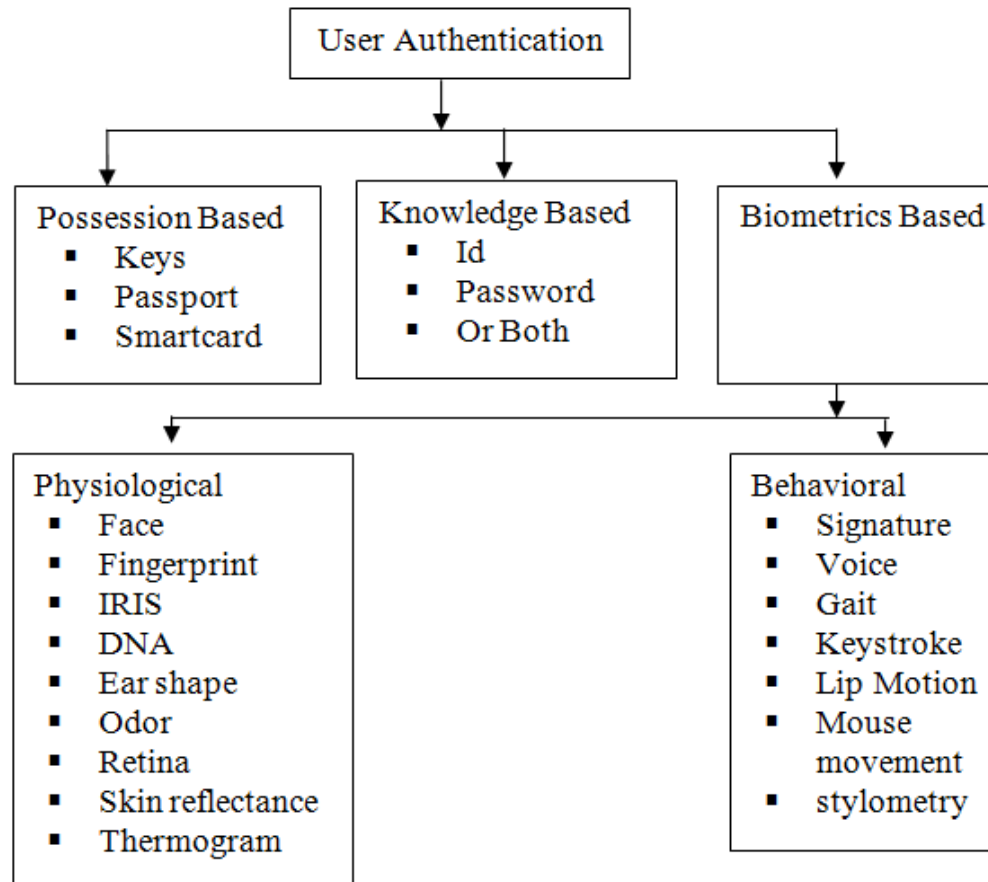


# Authentication and Identification Methods Used in Keystroke Biometric Systems

Md Liakat Ali, Charles C. Tappert,  
Meikang Qiu, and **John V. Monaco**

Seidenberg School of Computer Science and Information Systems  
Pace University, Pleasantville, NY 10570, USA

# Authentication methods



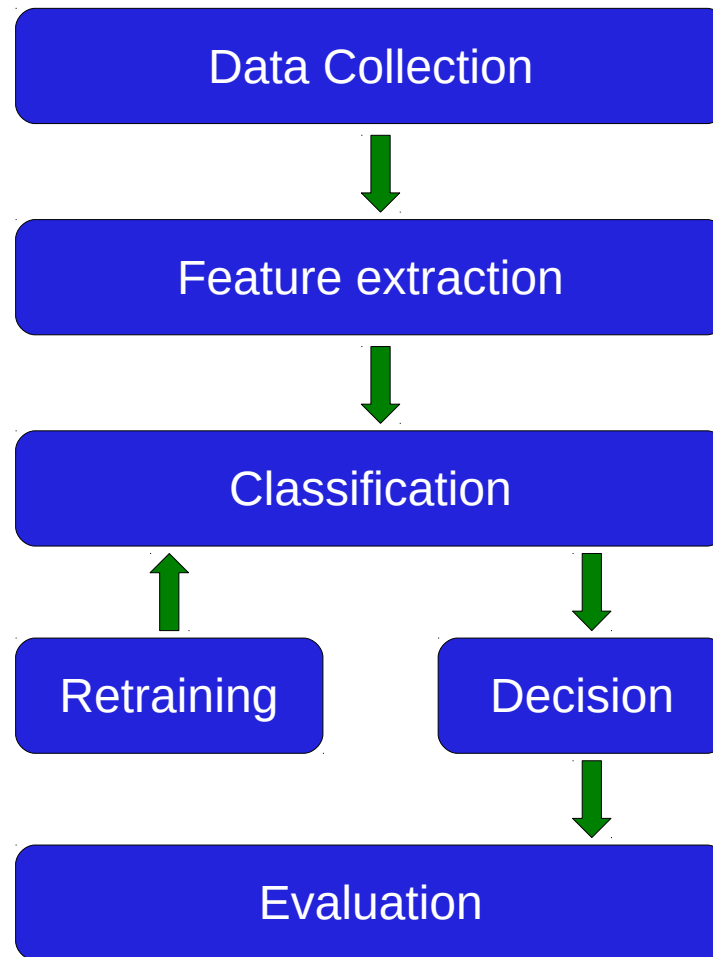
# Newell's time scale

Keystroke



Scale (sec)	Time Units	System	World (theory)
$10^7$	Months		<b>SOCIAL BAND</b>
$10^6$	Weeks		
$10^5$	Days		
$10^4$	Hours	Task	<b>RATIONAL BAND</b>
$10^3$	10 min	Task	
$10^2$	Minutes	Task	
$10^1$	10 sec	Unit task	<b>COGNITIVE BAND</b>
$10^0$	1 sec	Operations	
$10^{-1}$	100 ms	Deliberate act	
$10^{-2}$	10 ms	Neural circuit	<b>BIOLOGICAL BAND</b>
$10^{-3}$	1 ms	Neuron	
$10^{-4}$	100 $\mu$ s	Organelle	

# Keystroke biometric system



# Types of input

Long free-text

Lorem ipsum dolor sit amet,  
consectetur adipiscing elit, sed do

...

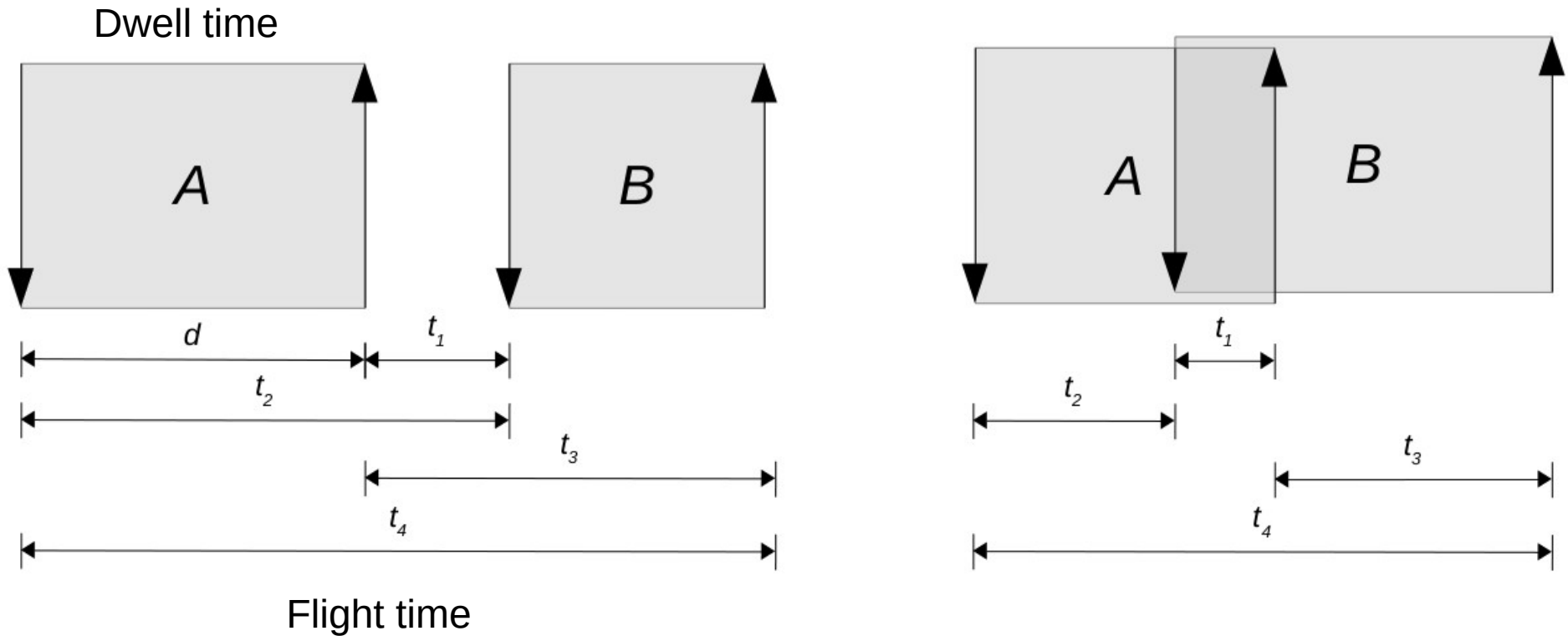
Long free-text

Mary had a little lamb,  
His fleece was white as snow.

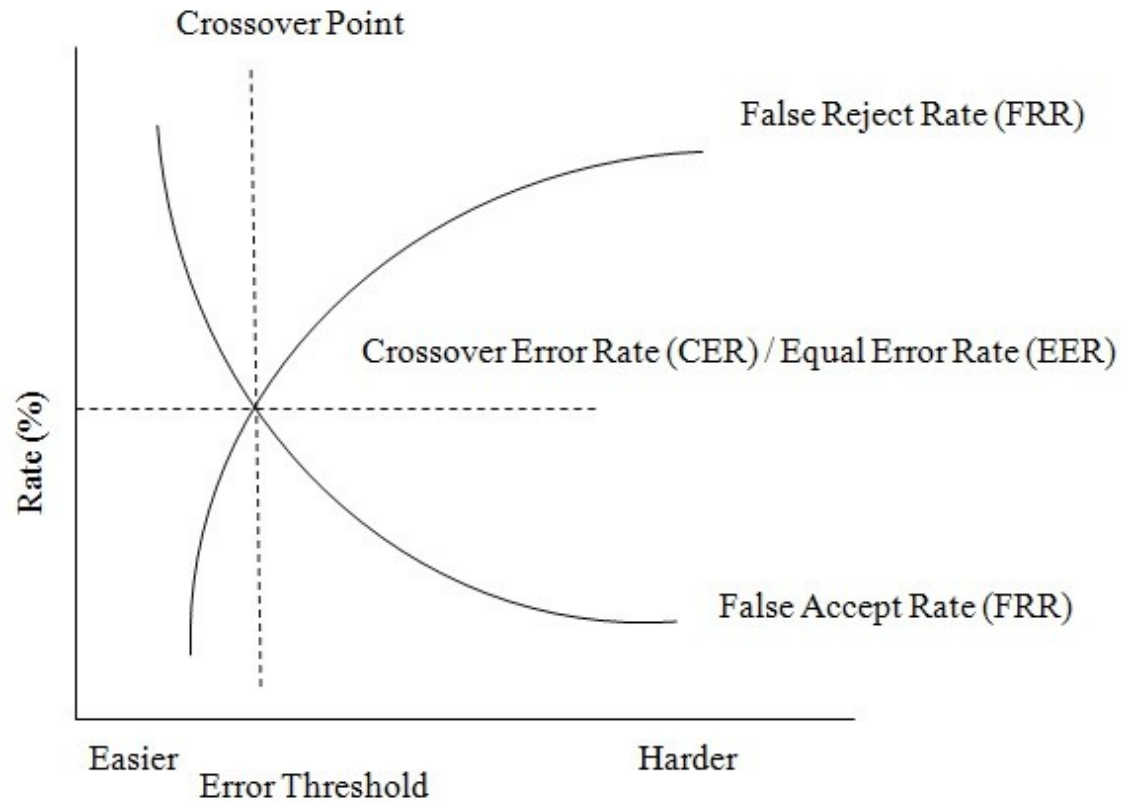
Short fixed-text

914 555 1234

# Keystroke timings



# Authentication performance

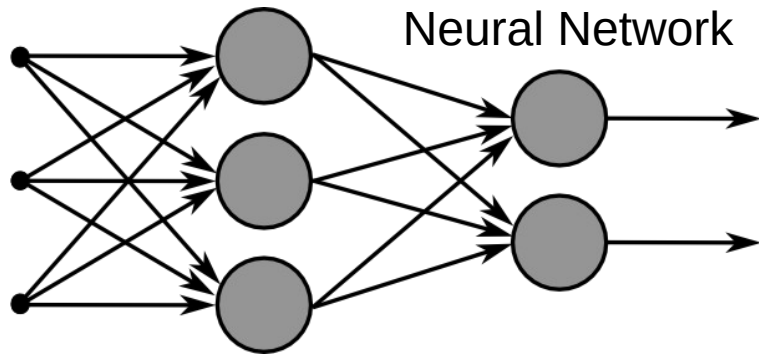


Convenient

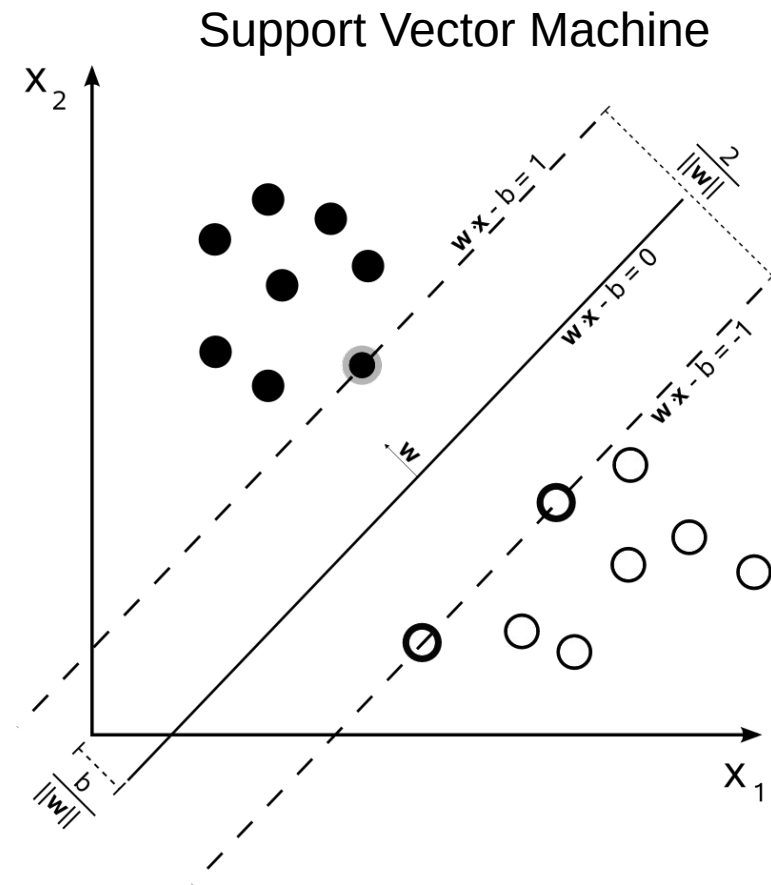
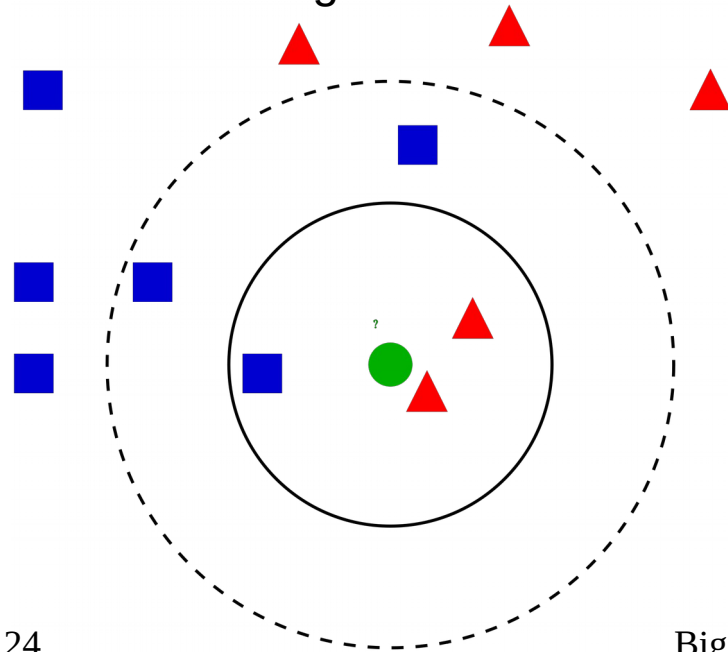


Secure

# Discriminative methods

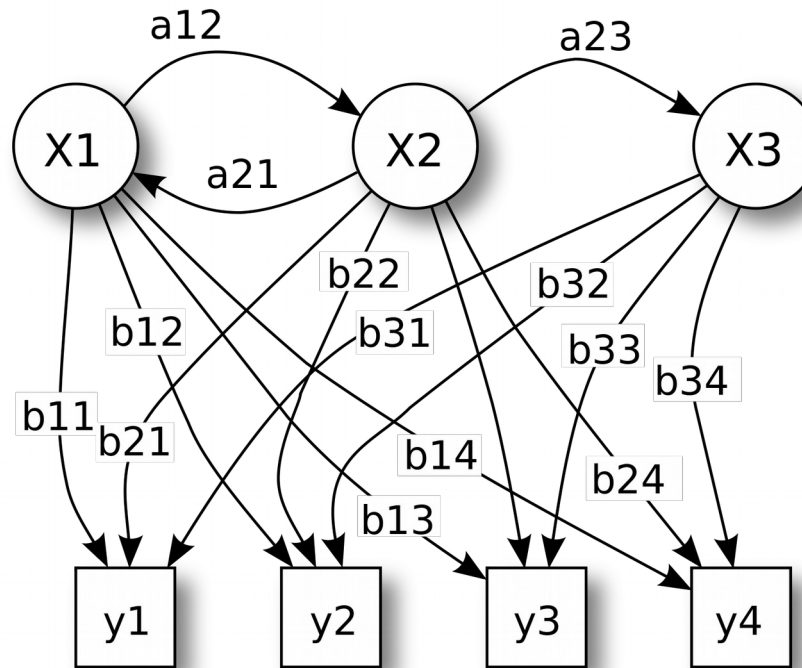


K-Nearest Neighbors





# Generative methods



Hidden Markov Model

# Overall performance

- Long free text: **< 10% EER**
- Short fixed-text: **10-20% EER**
- Depends on:
  - Number of enrolled users
  - Size and quality of training data
  - Keyboard type

# Future research

- Representative populations
- Feature engineering
- Real-time systems
- Template aging
- Benchmark datasets

*Thank you*